



# AllSync Plus® Surface & Double Dial Steel Case



AllSync Plus clocks are designed to work with multiple master clocks and correction signals. This unit is programmed to identify the signal it receives from the master and operate as that style of clock. Changing clock operation from one style to another is as easy as unplugging the clock from one system and plugging it into another. If needed, changing the placement of two small jumpers on the circuit board can change the voltage required to run this clock from 120VAC to 24VAC or 24VAC to 120VAC. This clock provides 15 minutes of backup run power without the use of batteries. If a power outage should last longer than 15 minutes, the clock will synchronize to the master clock at the hourly and 12 hour correction cycles.

## FEATURES

- 3 Year Warranty
- UL/cUL Listed - 12" & 15" round, surface only
- Microprocessor controlled movement
- 15 minutes of backup power (no batteries required)
- Accuracy to within ±1 second of a master clock
- Reduced power consumption
- Attractive modern design
- Heavy-duty, steel case construction
- Surface clocks include a security bracket
- Diagnostic LED

## Correction Signals

- Hourly correction: 7-9 seconds starting at the 57th minute and 54th second. 12 hour correction: 13-18 seconds starting at 5:57:54 (am and pm).
- Hourly correction: 24-28.5 seconds starting at the 0 minute and 0 second. 12 hour correction: 24-32 minutes starting at 6:00:00 (am and pm).
- \*Hourly correction: 54-56 seconds starting at the 58th minute and 5th second. 12 hour correction: 10 pulses of 94-96 seconds starting at 5:05:00 (am and pm) and repeating every 2 minutes.
- Hourly correction: 24-26 seconds starting at 0 minute and 0 second. 12 hour correction: 25 pulses of 24-26 seconds starting at 6:00:00 (am and pm) and repeating every 60 seconds.
- Hourly correction: 63-67 seconds starting at the 58th minute and 0 second. 12 hour correction: 14 pulses of 63-67 seconds starting at 5:06:00 (am and pm) and repeating every 2 minutes.
- \*Hourly correction: 54-56 seconds starting at the 58th minute and 5th second. 12 hour correction: 12 pulses of 63-67 seconds starting at 5:05:00 (am and pm) repeating every 90 seconds.

**Note:** When switching between these correction protocols, you must use a different correction protocol to complete the transition. The AllSync Plus clock needs to distinguish between hourly corrections before it can change correction protocols internally.

## COMPLIANCE

- FCC Part 15 Class B
- ICES-003



## SPECIFICATIONS

Clock hour & minute hands	Black
Clock second hand	Red
Clock case	Steel (black or gray finish)
Crystal	Convex glass (plexiglass on 12" square and 15")
Power	120VAC 50/60 Hz or 24VAC 50/60 Hz
Maximum operating voltage	24VAC setting = 32VAC 120VAC setting = 140VAC
Minimum operating voltage	24VAC setting = 18VAC 120VAC setting = 105VAC
Time accuracy	±1 second to SNTP time server. Supports two static IP address time servers for redundancy or pool SNTP domain names
Current draw	Single dial: 24VAC, 1 watt, .043 amps 120VAC, 3 watts, .028 amps  Double dial: 24VAC, 2 watts, .086 amps 120VAC, 6 watts, .056 amps
Warranty	3 Years

## GENERAL

Types of secondary clocks compatible with AllSync Plus:

Cincinnati	WS*, *D-8, *D-10, *D-12 Series
Dukane	24SS* Series, 240* Series
Edwards	*010 & *012 Series
Faraday	2315*, 2316*, 2335*, 2336*, 2370*, 2372*, 2380*, 2382*, 2311*, 2320*, 2331*, 2314*, 1310 through 1431 Series and 2420* through 2431* Series
Honeywell	ST402A* Series
Lathem	Type SS* Series
National Time	*EX-HH and *EX-LL Series
Simplex* & IBM	77* Series, 82* Series, 2310 – 92* Series, 6310 – 92* Series

\*Indicates more numbers before or after.

## OUTSIDE DIMENSIONS

### ROUND

"A":  
11 1/4" for 10" clocks  
13 1/4" for 12" clocks  
16 1/4" for 15" clocks

"B" Surface:  
2 1/4" for all clocks

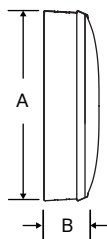
"B" Double dial:  
14 3/8" for 12" clocks  
17 1/8" for 12" clocks

"C" Double dial:  
8" for 12" & 15" clocks

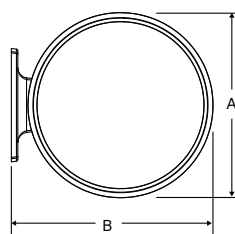
### 12" SQUARE

"A" 12 5/8"  
"B" Surface: 3 1/8"  
"B" Double dial: 17 1/8"  
"C" Double dial: 6 5/8"

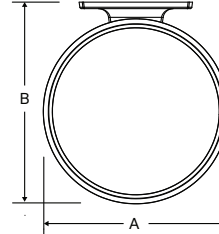
Steel surface mount



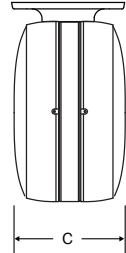
Wall mount round steel double dial



Ceiling mount round steel double dial



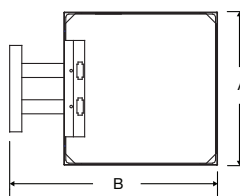
Steel double dial profile



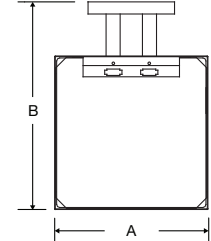
Surface mount steel square



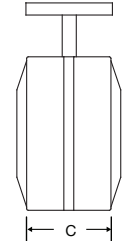
Wall mount steel square double dial mechanical



Ceiling mount steel square double dial mechanical



Steel square double dial profile



Double dial mounting requires a 4" square electrical box in the wall or ceiling.

At American Time, we continually strive to improve our products to meet our customers' needs and to provide the best possible value. The above specifications are believed to be correct, are subject to change without notice and may otherwise vary from the above. Please call if you need verification of any specifications or the suitability of a particular product for a particular application.

© American Time

## ORDERING INFORMATION

Part#	Description	
U44BHAA404	10" Rd Surface	120VAC
U44BHBA404	10" Rd Surface	24VAC
U54BHAA404	12" Rd Surface	120VAC
U54BHBA404	12" Rd Surface	24VAC
U57BGAA404	12" Sq Surface	120VAC
U57BGBA404	12" Sq Surface	24VAC
U64BGAA404	15" Rd Surface	120VAC
U64BGBA404	15" Rd Surface	24VAC
U53BHAA204	12" Rd Double dial wall	120VAC
U53BHBA204	12" Rd Double dial wall	24VAC
U52BHAA204	12" Rd Double dial ceiling	120VAC
U52BHBA204	12" Rd Double dial ceiling	24VAC
U51BGAA204	12" Sq Double dial wall	120VAC
U51BGBA204	12" Sq Double dial wall	24VAC
U50BGAA204	12" Sq Double dial ceiling	120VAC
U50BGBA204	12" Sq Double dial ceiling	24VAC
U63BGAA204	15" Rd Double dial wall	120VAC
U63BGBA204	15" Rd Double dial wall	24VAC
U62BGAA204	15" Rd Double dial ceiling	120VAC
U62BGBA204	15" Rd Double dial ceiling	24VAC

**Notes:** Replace the BH (Black Sand) in the part # with GH for a Steel Gray case.

For a plexiglass crystal, replace the BH or GH in the part number with BG or GG. Square and 15" clocks available with plexiglass crystal only.

### Bezel Finishes



Black Sand=BH/BG



Steel Gray=GH  
(12" only)