



AllSet® Battery Clocks Steel Case

AllSet auto daylight saving time battery clocks are ideal for schools, hospitals, state and federal buildings. Clock bezels are constructed of durable, 21-gauge cold-rolled steel, manufactured to specific high quality standards, with a durable powder coat finish in two colors. Glass crystal is highly resistant to scratches. Shatter-resistant polycarbonate lenses are also available (standard on 12" square and 15-24" clocks). Customization of dials is available. The hour and minute hands are black aluminum. Sweep second hand is red aluminum.



12-15", Dial 89

FEATURES

- 3 Year Warranty
- Automatic adjustment for Daylight Saving Time
- Durable steel case in black or gray
- Powder coat finish
- Convex scratch-resistant glass or shatter-resistant polycarbonate crystal
- Sweep second hand (12-15")
- Double dial mounting available
- 3 AA battery holder

SPECIFICATIONS

Operating voltage	1.5vdc
Operating voltage range	1.3 to 1.7vdc
Operating temp range	23°F to 122°F (-5°C to +50°C)
Accuracy	±1 Sec/Day (at 1.5V)
Nominal torque at 1.5vdc	2.0 g/cm @ second shaft

DESCRIPTION

The AllSet clock movement features a microchip with an internal battery that keeps track of the current date and time. The microchip is programmed to make daylight saving time changes at 03:00 am Eastern, 02:00 am Central, 01:00 am Mountain, and 12:00 am Pacific time twice per year. In the Spring, the movement will move the hands forward one hour at an accelerated speed. In the Fall, the movement will fast forward the hands and start ticking again when the clock is on time; adjusting back to standard time.

Clocks use a quartz-based battery movement which uses 3 AA alkaline batteries to extend maintenance-free clock operating life up to 4 years.

The movements on weather-resistant models are protected inside an enclosure to prevent dust and water from getting in, ensuring problem-free operation.

Note: Time must be manually set at startup and after replacing the batteries. Internal time/date is only used for moving hands for DST changes.

Bezel Finishes



Black Sand=BH



Steel Gray=GH
12" only

ORDERING INFORMATION

BLACK STEEL CASE – ROUND

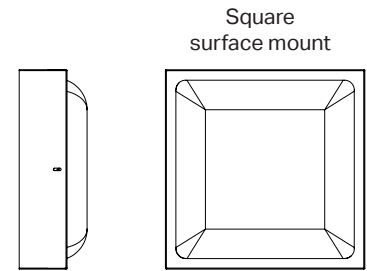
Part #	Description	Crystal	Dia.	Depth
R54BHQD989	12" Surface Mount, Dial Style 89	Glass	13¼"	2¼"
R55BHQD789	12" Flush Mount, Dial Style 89	Glass	13¼"	1⅝"
R53BHQD289	12" Double Dial Wall Mount, Dial Style 89	Glass	13¼"	8"
R52BHQD289	12" Double Dial Ceiling Mount, Dial Style 89	Glass	13¼"	8"
R64BGQD989	15" Surface Mount, Dial Style 89	Poly	16½"	2¼"
R65BGQD789	15" Flush Mount, Dial Style 89	Poly	16½"	1⅝"
R63BGQD289	15" Double Dial Wall Mount, Dial Style 89	Poly	16½"	8"
R62BGQD289	15" Double Dial Ceiling Mount, Dial Style 89	Poly	16½"	8"
R74BGQD904	18" Surface Mount, Dial Style 04	Poly	19"	3¼"
R84BGQD904	24" Surface Mount, Dial Style 04	Poly	24¼"	4¼"



18-24", Dial 04

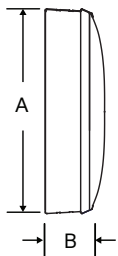
BLACK STEEL WEATHER-RESISTANT CASE – ROUND		Crystal	Dia.	Depth
R54BWQD989	12" Surface Mount, Dial Style 89	Poly	13¼"	2¼"
R64BWQD989	15" Surface Mount, Dial Style 89	Poly	16½"	2¼"
R74BWQD904	18" Surface Mount, Dial Style 04	Poly	19"	3¼"
R84BWQD904	24" Surface Mount, Dial Style 04	Poly	24¼"	4¼"

BLACK STEEL CASE – SQUARE			Sq.	
R57BGQD989	12" Surface Mount, Dial Style 89	Poly	13¼"	2½"
R51BGQD289	12" Double Dial Wall Mount, Dial Style 89	Poly	12⅝"	6⅝"
R50BGQD289	12" Double Dial Ceiling Mount, Dial Style 89	Poly	12⅝"	6⅝"



Notes: Change the case color by changing BH (black) in the part number to GH (gray), 12" models only. Double dials available in black only. Double dial mounting requires a 4" square electrical box in the wall or ceiling. If flush mounting in an existing backbox, change the ? in the Model No. to specify correct hanger type from the key: 1=National Time 5=Simplex®, Dukane, Lathem 6=Cincinnati/Edwards, Faraday, Honeywell 8=Standard® Electric Change the 89 in Model # to change the dial style. *Batteries not included.

Steel surface mount



OUTSIDE DIMENSIONS

"A" Dimensions:
13¼" for 12" clocks
16½" for 15" clocks

"B" Dimensions: Surface
2¼" for 12" & 15" clocks

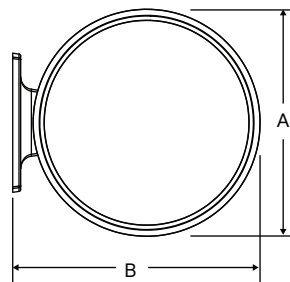
Double Dial:
Note: includes 2 surface clocks

"A" Dimensions:
13¼" for 12" clocks
16½" for 15" clocks

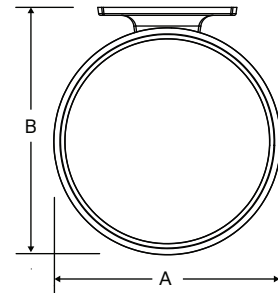
"B" Dimensions:
14¼" for 12" clocks
17¼" for 15" clocks

"C" Dimensions:
8" for 12" & 15" clocks

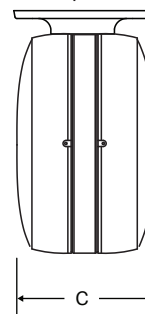
Wall mount round steel double dial



Ceiling mount round steel double dial



Steel double dial profile



At American Time, we continually strive to improve our products to meet our customers' needs and to provide the best possible value. The above specifications are believed to be correct, are subject to change without notice and may otherwise vary from the above. Please call if you need verification of any specifications or the suitability of a particular product for a particular application.

© American Time